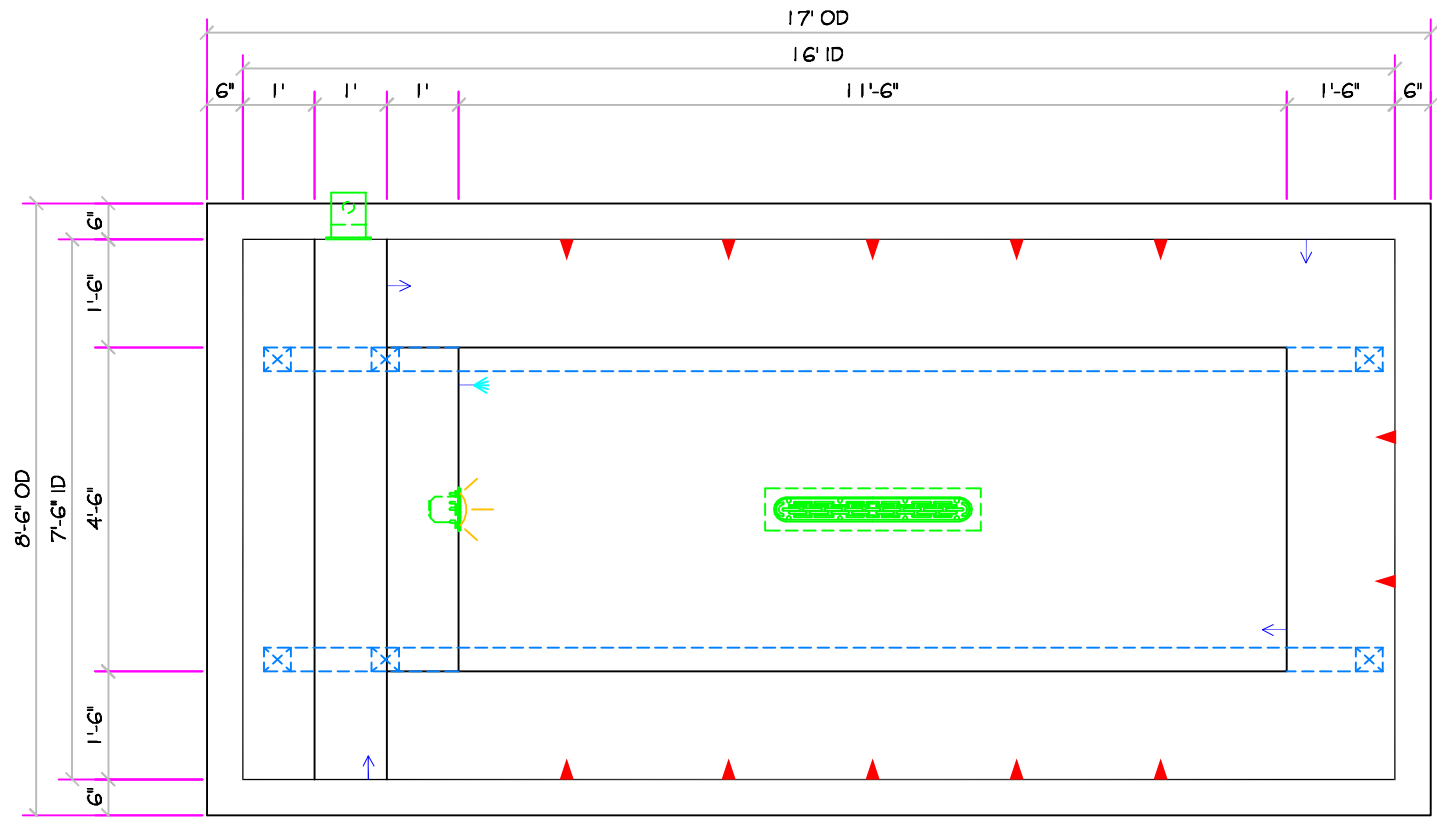


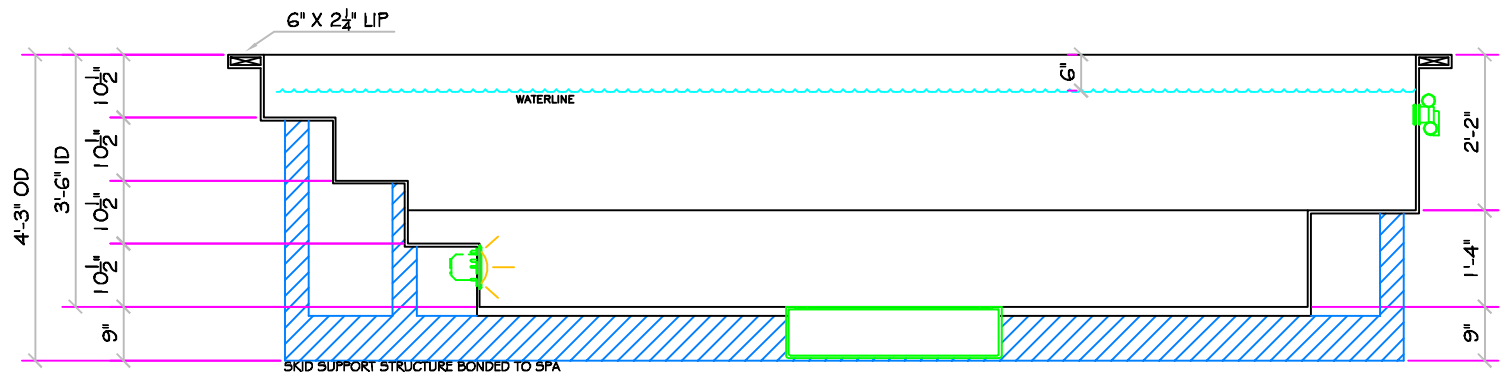
SPECIFICATIONS	
DRY WEIGHT:	3350
TOTAL WEIGHT:	22557
WATER:	2304
VOLUME:	308
WEIGHT:	19207
SURFACE AREA:	120 SQ. FT.
IAPMO#:	1138
FDA#:	2030305

SKID SUPPORT STRUCTURE BONDED TO SPA	
*SKIDS SUPPLIED BY NESPA	
LIGHT NICHE	
SPA BRIGHT - 120 V, 100 WATT, 50 CORD, U.L. APPROVED	
SKIMMER	
HAYWARD SP-1084FVE SURFACE SKIMMER W/ EQUALIZER, NSF APPROVED	
MAIN DRAIN	
AquaStar 32CDFLFR, 32" Channel Drain, Approved Max Flow Rate/Floor = 236 GPM @ 3.4 lbs Wall = 136 GPM @ 1.9 lbs V.G.B. Approved Safety Drain	
SIDEWALL SUCTION	
Paramount SDX 10" HIGH FLOW SAFETY DRAIN Area of Opening = 43.201 in ² Velocity @ 200 GPM = 1.485 fps V.G.B. Approved Safety Drain	
JET	
HYDRO INLETS 1-1/2" WATER - 1-1/2" AIR HYDROAIR #10-5100 COMPLIES W/ ANSI CODE ASME A112.19.8-07 U.L. APPROVED	
RETURN	
INLET FITTINGS 1-1/2" WALL TYPE W/ EYEBALL HYDROAIR #10-3500 COMPLIES W/ ANSI CODE ASME A112.19.8-07 U.L. APPROVED	
FILL	
INLET FITTINGS 1-1/2" WALL TYPE W/ EYEBALL HYDROAIR #10-3500 COMPLIES W/ ANSI CODE ASME A112.19.8-07 U.L. APPROVED	



16' LEGACY
ALL TILED SPA - Fits 12 Adults

* **Complies with V.G.B. Pool and Spa Safety Act**



ALL DIMENSIONS SUBJECT TO 1/4" TOLERANCES

Oct 12, 2009 - 11:20am

These drawings, concepts, and details contained herein are the original proprietary designs of NESPA ENTERPRISES, developed over many years of experience in the pool and spa industry and as such are protected by the copyright laws of the United States Government. Reproduction of any of the above without written permission to do so by NESPA ENTERPRISES, is illegal.

NESPA ENTERPRISES INC.

2800 Richter Ave. Ste. C Oroville, CA 95966

Office: (530) 534-9910

Fax: (530) 534-9915

E-Mail: sales@tiledspas.com Web Site: www.tiledspas.com



SIZE
A

DWG NAME

NESPA_IAPMO_MODELS

DWG TYPE

16' LEGACY

SCALE 3/8" = 1'

DATE 10/12/2009

SHEET

PAGE 1 OF 1